



After a steady decline following WWII, local farms are seeing a resurgence of support in our region.



We Want You! To Support Local Farms

During WWII, farmers were crippled by the loss of labor to the armed services, and as a result, the American public was asked to embrace the concept of the "Victory Garden" to help the country avoid massive food shortages and starvation. A government sponsored campaign, "Plant More in '44," successfully encouraged nearly 20 million Americans to plant small back yard and neighborhood garden plots to supplement America's food supply.

Nearly 70 years later, and for very different reasons, grass roots campaigns focusing on agricultural production are sprouting up all over the country. These campaigns, driven mostly by human health and environmental concerns, have a different message than those sponsored by the government in the 1940's but the results are similar: an increased interest in locally-grown foods and a surge of support for our hard working small farmers.

CONTINUED ON PAGE 6



10 GREAT REASONS TO BUY LOCAL FOOD

- Tastes better
- More nutritious
- Uses less packaging
- Better for the environment
- Promotes energy conservation
- Connects you to the source of your food
- Strengthens community and local economy
- Encourages sustainable agriculture
- Preserves open space
- Supports small farms



Land Conservation in Massachusetts Prevails

The State Supreme Judicial Court upholds the tax-exempt status of protected land.



After many sleepless months, the Massachusetts land trust community breathed a collective sigh of relief on May 15, 2014 when the Supreme Judicial Court of Massachusetts handed down a ruling refuting the idea that towns could levy property taxes on conservation lands. It was a long, agonizing winter for land trust boards and staff around the state as we awaited the decision on *New England Forestry Foundation v. the Town of Hawley*, a potentially devastating case that challenged the public benefit of conserved lands.

In 2009, the Town of Hawley denied property tax exemption to NEFF for the 134-acre Stetson Phelps Community Forest. When their appeal to the town failed, NEFF took the denial to the state Appellate Tax Board (ATB). The ATB ruled in favor of the Town of Hawley. After consulting with conservation colleagues in other Massachusetts conservation organizations, NEFF chose to pursue an appeal directly to the State Supreme Judicial Court (SJC). Thankfully, on May 14, the SJC ruled in favor of NEFF.

We are grateful and relieved that the unanimous decision of the SJC concluded that the act of holding land in pristine condition is a charitable activity that serves the general public in a variety of important ways, the protection of water, air and wildlife habitats, as well as the absorption of carbon emissions to name just a few. Most importantly, the decision means that Wildlands Trust and other Massachusetts based organizations involved in conservation can continue to pursue our charitable missions without the fear that we will one day have to pay the taxes on the properties we have protected—a burden that could have been disastrous for land protection in Massachusetts.

Karen Grey
Executive Director

Board of Directors

CHAIRMAN

Doug Hart/*Duxbury*

VICE CHAIRMAN

Crystal Farrar Gould/*N. Marshfield*

SECRETARY

Charlotte Russell/*Plymouth*

TREASURER

Greg Lucini/*Berkley*

Allan Caggiano/*Norwell*

Sam Chapin/*Plymouth*

Lisa Fortune Creeden/*Middleboro*

Scott Ford/*Brockton*

Michael J. Hanlon/*Plymouth*

Gary Langenbach/*Kingston*

Jean Loewenberg/*Plymouth*

Virginia Murray/*Plymouth*

Wayne R. Petersen/*Hanson*

Molly Fannon Williams/*B'water*

SPECIAL COUNSEL

Michael Nuesse/*Hull*

Staff

EXECUTIVE DIRECTOR

Karen H. Grey

ASSISTANT DIRECTOR

Gabriela Silva, Ph.D.

DIRECTOR OF LAND PROTECTION

Scott MacFaden

MEMBERSHIP MANAGER

Debbie D'Isabel

GIS & WEBSITE CONTENT MANAGER

Marilyn Levandoski

OFFICE MANAGER

Karyn Lord

ACCOUNTING

Lisa Burch

COMMUNITY GARDEN MANAGER

Elaine Pollack

AMERICORPS MEMBERS

Mike Cerasaro

Moire Loftus

Allegra Wrocklage

Administrative offices are at
165 West Street, Duxbury, MA.

FOR INFORMATION about membership or the benefits of conveying land or conservation restrictions (agricultural included) to the Trust, call or write:

Wildlands Trust
PO Box 2282
Duxbury, MA 02331

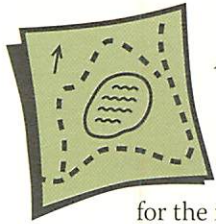
(781) 934-9018 Phone
(781) 934-8110 Fax
info@wildlandstrust.org

www.wildlandstrust.org



Mapping the Progress of Davis-Douglas Farm

The creation of trail maps for the more than 1,800 acres of Trust property adjacent to our new headquarters is one of the many projects underway on the Farm.



Ah, summer! With the advent of warmer weather, we are another season closer to moving into our new headquarters at Davis-Douglas Farm on Long Pond Road in Plymouth. The fields are greening up, the conversion of the existing farmhouse to office building is progressing nicely, and we are actively planning

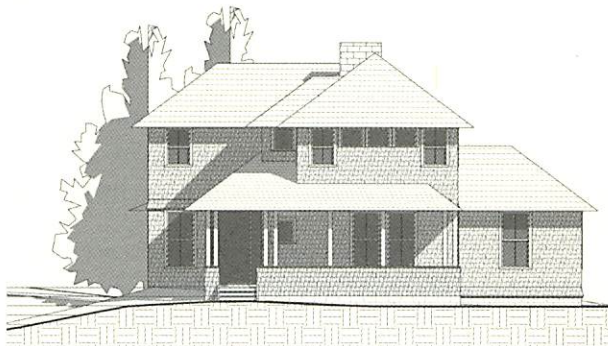
for the many new fun and educational opportunities that this new location has to offer. With staff right on the premises and a Conservation Hall to be built, we will have the opportunity to provide unique programs throughout the year. Many thanks go out to everyone who participated in our on-line outreach survey—your input and suggestions have been incredibly helpful!

One of the biggest outcomes of the survey was the high level of interest across the board in outdoor recreation, particularly in hiking and walking—which is one of the major reasons why we are so excited about moving to Plymouth. We envision Davis-Douglas Farm as a community trail-head: a place for people to park, fill up their water bottles, check for trail updates, connect with other like-minded hikers in our community, and become involved with Wildlands Trust. Located on 10 acres in the geographical center of Plymouth, Davis-Douglas Farm promises to be a new hub in an existing network of trails on publicly accessible land throughout the region, including properties owned by the Town of Plymouth, the Commonwealth, and over 1,800 acres owned and managed by yours truly, Wildlands Trust. Within minutes, hikers will feel the cool shore breeze and enjoy the magnificent views afforded by Long Pond and Halfway Pond. How lucky we are to have such a backyard—where we can watch osprey soar and plunge overhead, encounter fresh otter tracks and cross paths with box turtles.

While physical construction of the trail-head is already underway, we are excited to have help from an extremely knowledgeable volunteer. As anyone who has ever gotten lost knows, there is no replacement for a good map! Lucky for us, Malcolm MacGregor, longtime Plymouth resident, avid hiker, and GIS mapping expert, has agreed to lend a hand with creating detailed trail maps connecting Davis-Douglas Farm with the surrounding region. Many folks familiar with this area already know Malcolm and have possibly hiked with him before—he has a tremendous knowledge of the routes and terrain.

Working with him, we hope to create user-friendly and accessible maps which will help to better connect our neighbors and visitors with the critically important landscape that surrounds us.

We can't wait to hit the well-mapped trails in the near future!



CHAIRMAN'S COUNCIL GOING TO THE COWS

The Trust's Annual Preserves Tour is just one of the many benefits enjoyed by members of our Chairman's Council. Last year, the Council was treated to a tour of two Trust preserves that concluded with a magnificent late morning snack hosted by the Russo's Just Right Farm. This June's tour, themed "Saving Our Agricultural Heritage," will take them to O'Neil Farm in Duxbury and Old Field Pond Preserve in Bourne. Members of the Chairman's Council are leadership donors whose annual unrestricted gift of \$500 or more supports the Trust's conservation mission—protecting local land, caring for properties in our portfolio, and engaging the community through programs and events. Consider becoming a member of the Chairman's Council, too.

Trailblazers Hit the Trails to Get Ready for Summer

Several projects have been completed with much more in the offing.

BEETLES, AND LOOSESTRIFE, AND KNOTWEED, OH MY!



Sophomores at Plymouth's Rising Tide Charter School in Plymouth have been working diligently researching and documenting the non-native species of plants, insects, and animals in southeastern MA. Their findings will be compiled into an Invasive Species Guide for Wildlands Trust, and will be available soon on our website and at several of our preserves. The students took their research into the field at Halfway Pond Conservation Area in Plymouth where they not only removed invasive species, they cleaned up a few trails in the bargain. A big shout-out to the students for turning their scientific curiosity into a comprehensive and educational guide.



Trailblazers volunteers (top) at Halfway Pond in Plymouth and (below) installing the parking area at the Delano property in Rochester.

We are very happy to report that despite our long, cold, and frequently stormy winter, Wildlands Trust preserves did not sustain major storm damage as was the case with last year's winter, and remained opened and well-visited. As the weather has warmed, we've been working extra hard to make sure that our preserves are ready for the upcoming summer season.

Major progress is being made on the development of our Comprehensive Trails Management Plan, and we are very excited to begin preliminary implementation this summer season. The first stage of this project includes the implementation of our signage program which will improve the visitor experience through our entire system of preserves.

At the Stephen C. L. Delano Memorial Forest Preserve in Rochester, we are very pleased to announce the installation of a three-car parking area off of Mary's Pond Road. The parking area

affords access to this beautiful 110-acre preserve and a system of trails that provides each visitor with a full picture of the natural and cultural history of the forest.

Several other major projects are moving ahead on schedule. A major trails re-development project at Striar Conservancy in Halifax will re-route the trail to permanently dry areas and will allow visitors to access the more unique topographical and ecological areas on the preserve. Ongoing work at Brockton Audubon Preserve in Brockton and Hoyt-Hall Preserve in Marshfield include plans to have parking areas installed and trail systems developed by the end of the summer visitor season.

Although unpredictable weather limited our winter activity, the Trailblazers are back in full swing. Several "Community Activity Days"—a new program where volunteers join us for light clean-up work at preserves—are planned for the summer. Volunteers helped out in June at the Brockton Audubon Preserve and at Great River Preserve in Bridgewater. Matt Luongo and Owen Grey are on board again this summer to help with the daily maintenance of preserves—mowing, picking up trash, doing tree and trail work, and parking lot maintenance. Be sure to say "hi" if you see them and give them a big thumbs-up for their hard work.

To learn more, or to volunteer for future events, contact Mike by calling 781-934-9018 x117 or by email at mccerasaro@wildlandstrust.org. Or visit our website, www.wildlandstrust.org.

Getting Out and About With Wildlands Trust

Here's an update on some recent Trust activities.



We've been busy here at Wildlands Trust! Take a look below at some of our recent goings-on around the region and keep your eyes peeled for upcoming Trust events. Show your support by liking us on Facebook and stay-up-to-date by visiting www.wildlandstrust.org or by joining our e-newsletter mailing list.

MARSHFIELD FARMERS' MARKET Do you know that Wildlands Trust has several active farms under our stewardship? You do if you saw us at the Marshfield Farmers' Market in March. We had the opportunity to talk to the market-goers about the great member supported work we've been doing to preserve farmland in southeastern MA.

BIRDING WITH WAYNE PETERSON In April, twenty-five binoculared Trust members spent a beautiful early spring morning birding with Wayne Petersen at Great River Preserve in Bridgewater. We saw a wide variety of birds including the lesser yellowlegs, a shorebird that was taking advantage of the flooding Taunton River. Thank you Wayne for leading a great walk!

TRAILBLAZERS April also saw the Wildlands Trailblazers back in action. At Willow Brook Farm, volunteers learned how to prune trees and participated in an apple tree release. "Releasing," a silvicultural (think tree farming) term, means giving desirable trees access to light, water, and nutrients by removing undesirable trees that would otherwise compete with them for resources—making for some very happy apple trees.

4th ANNUAL 5K RUN FOR CONSERVATION The best is yet to come! Join us for our biggest event of the year on June 28 at Myles Standish State Forest. Sponsored by Penobscot Investments, Anchor Press and Rockland Trust, the half-trail/half-road race features a free kids fun-run, a barefoot runner division, and a pre- and post-race eco-fair. To learn more and to register, visit www.wildlandstrust.org.



Partnering With Plympton on Cato's Ridge

Wildlands Trust's effectiveness in saving land in the region is due in part to our strong partnerships with the communities we work in. Our most recent effort has been assisting Plympton's Open Space Committee members in mapping current and prospective trails on Cato's Ridge preserve. Using the Wildlands Trust GPS and GIS software, the Trust's AmeriCorp volunteer Allegra Wrocklege has created trail maps that the committee can now use in brochures and guides. As an adjunct project, Allegra hopes to coordinate Trust volunteers to help clear trails on the adjoining town-owned Churchill property. Plympton has already shown a strong commitment to open space—residents enjoy walking the Person Preserve and Winnetuxett Preserve conservation areas. The Cato Ridge Preserve project is a continuation of the Trust's longstanding positive relationship with the community, a partnership that will ensure the enduring integrity of open space and our work in the region.

PLAN TO STAY FOREVER WILD



"The true meaning of life is to plant trees under whose shade you do not expect to sit."

—Nelson Henderson

The "Wildlands Forever Society" honors the visionary individuals committed to providing a legacy of land conservation by including Wildlands Trust in their will or estate plan. Their generous and meaningful support helps us protect and steward the lands you care about well into the future. Making a bequest, or planned gift, passes your conservation commitment on to the next generations. Let us know if you have included the Trust in your will or estate plan so that we may welcome you to our "Wildlands Forever Society." And if you haven't, please consider including the Trust in your plans, and help forever protect our wildlands.

We Want You! To Support Local Farms —CONTINUED FROM PAGE 1

In our region, these working farms were once commonplace with many southeastern Massachusetts towns even designated as “farm towns.” Since WWII, however, about three-quarters of this farmland has disappeared, lost to development pressures and the trend of growing housing and commerce instead of crops.

At Wildlands Trust, saving agricultural land is part of our mission to protect the region’s natural heritage. We have over a dozen agricultural properties in our portfolio ranging from working crop and dairy farms to cranberry bogs, hay fields, and community gardens. Wildlands Trust is honored to partner with committed, hard-working farmers. We encourage our

members to support their efforts to provide healthy food for our region. As part of our annual membership drive, ten local farms are offering exclusive discounts to members of the Wildlands Trust. We hope these discounts might be an incentive for you to visit and make purchases from an expanding network of sustainable farms in southeastern Massachusetts.



USE YOUR MEMBER DISCOUNT CARD AND SUPPORT THESE LOCAL FARMS AND CSAs

BAY END FARM / BUZZARD'S BAY

200 BOURNE DALE ROAD

Bay End Farm is an organic CSA and farm stand providing fresh produce to families, farmers’ markets, and restaurants around the communities of Boston and Cape Cod for the past 12 years. The farm stand is open Wednesdays 1:30–5:30pm and Saturdays 10am–2pm, late June through mid-October.

www.bayendfarm.com

BILLINGSGATE FARM / PLYMPTON

6 COUNTY ROAD (RT. 106)

Billingsgate Farm offers a CSA and farm stand with delicious organic fruits and vegetables, pick-your-own berries and pumpkins, and a corn maze (in season). The farm stand is open Monday through Friday, 10am–6:30pm, Saturday and Sunday, 9am–6:30pm, May through October.

www.billingsgatefarm.com

C&C READING FARM / W. BRIDGEWATER

175 EAST CENTER STREET

Recently combined with Billingsgate Farm, C&C Reading Farm offers a second farm stand for area customers. The farmers plan to raise both organic and conventional produce with crops for local consumers including pumpkins, squash, tomatoes, apples, strawberries, and more. Like the Billingsgate Farm location, the farm stand is open Monday through Friday, 10am–6:30pm, Saturday and Sunday, 9am–6:30pm, May through October.

www.billingsgatefarm.com

ELLIOT FARM / LAKEVILLE

202 MAIN STREET (RT. 105)

For the past 20 years, family-owned Elliot Farm has provided southeastern Massachusetts with quality, native produce through their CSA and farm stand. The farm stand is open 7 days a week from 10am to 6pm during the season. Check their website for opening/closing dates.

www.elliottfarm.org

HISTORIC O'NEIL FARM / DUXBURY

146 WINTER STREET

The 145-acre Historic O’Neil Farm has been in continuous agricultural use since the early 1700s. You can visit this permanently-protected working dairy farm on Farm Day in September, or walk the publicly-accessible trails looping the property accessible from Autumn Avenue. Youth farm programs are offered.

www.historiconeilfarm.org

HOLLY HILL FARM / COHASSET

236 JERUSALEM ROAD

Holly Hill Farm is an organic farm producing fruit, vegetables, and flowers for sale at their farm stand. They also work with meat, poultry, and fish purveyors to offer a variety of local foods. Great educational summer camp and school programs, too! The farm stand is open Saturdays and Sundays, 11am–6pm, late May through December.

www.hollyhillfarm.org

HOLMES FARM STAND / PLYMOUTH

127 MANOMET POINT ROAD

Holmes Farm is a collaborative effort with area farmers, and they also offer a CSA. Check their website for farm stand hours and dates for their live music show series.

www.theedibleyard.com

HORNSTRA FARMS / NORWELL

246 PROSPECT STREET

Hornstra Farms is a local South Shore dairy, and their new farm store is now open daily 10am–6pm. The store carries a wide array of grocery products, along with farm fresh milk and beautiful views of the dairy cows in the field.

www.hornstrafarms.com

MARSHFIELD FARMERS' MARKET

MARSHFIELD FAIRGROUNDS

140 MAIN STREET (RT. 3A)

With over 32 vendors, the Marshfield Farmers’ Market is a busy affair and a great way to support local agriculture. Open every Friday, 2pm–6pm, May 30 through October 10 (excluding July 4).

www.marshfieldfair.org/fm.htm

SAUCHUK FARM / PLYMPTON

53 PALMER ROAD (ROUTE 58)

Sauchuk Farm offers a CSA, farm stand, corn maze (in season), and pick-your-own strawberries, blueberries and pumpkins. The farm stand is open daily, 9am–6pm, May through October.

www.sauchukfarm.com

Thank You for Your Contribution

The Trust relies on private philanthropy to fund the work we do to save land throughout the region. You, our supporters, *are* Wildlands Trust. Thank you for your vision and for your dedication to preserving land for future generations.

New Members

Welcome to the 39 new members who joined the Trust since March 1, 2014.

In Honor of

ELIZABETH LOFTUS

-Caitlin Loftus, *Milford*

PAM SCHMIDT

-Eric Schmidt, *Alexandria, VA*

Thank You, Volunteers

The Trust wouldn't be where it is without volunteers. We appreciate your support.

Ruth Anderson	William Johnson
Andrew Barnett	Karen Kurkoski
Sam Barnett	Jeff Lord
Tom Barnett	Will Luongo
Joan Bartlett	Adam Manoogian
James P. Broderick III	Dan Mariano
James P. Broderick Jr.	John Mariano
Jeremy Brodeur	Ellen Milt
Cynthia Brown	Hazel Minsky
Donn Burgess	James Moriarty
Tricia Cassidy	Dan Moriarty
Karen DeAngelis	Joseph Muncie
Michael DeBruin	Kathy Murphy
Peter DeBruin	Pauline Perkins
Natalie Derrick	John Rutkowski
Scott Ford	Elizabeth Stacey
Alan French	Isabel Stearns
Matt Furey	Nancy Stewart
Evie Galanis	Jon Taylor
Mary Gartung	Michael Walsh
Kris Gaskins	Nick Walsh
Erik Gustafson	Andrea Watkins
Robbie Haigh	Bryan Williams
Mary Lou Hammond	Morgan Williams
Barbara Hathaway	
Kate Harvey	
Janet Holmes	
Andrew Johnson	
Peter Johnson	

And thanks to everyone who volunteered to make the Run for Conservation a success!

In Memory of

SAM DAVIS

-John & Lois Ahrens, *Duxbury*
 -Alice Baker, *East Sandwich*
 -Rusty & Aileen Briggs, *Plymouth*
 -Lindsay Cavanagh, *Newburyport*
 -Lydia Cochrane, *IL*
 -Cynthia DeAngelis, *PA*
 -Deborah Davis, *PA*
 -Frances Fisher, *NC*
 -Gregory Fox, *CO*
 -Sally Halsey, *CT*
 -Joseph & Lesley Hoopes, *NY*
 -Nancy Joline, *Duxbury*
 -Doug and Phoebe Kitson-Davis, *PA*
 -The Kraft Family, *Marblehead*
 -Jane Montanari, *Plymouth*
 -Ann Nestor, *CO*
 -Doug and Lois Post, *Plymouth*
 -Wayne & Patricia Reid, *PA*
 -Reynolds Richards Attorneys, *NY*
 -Marda Schropp, *PA*
 -John Spence, *Duxbury*
 -Peter and Carmelina Stearns, *Manomet*
 -Mark and Sally Stebbins, *NH*
 -John & Esther Wassrman-Starrels, *CO*
 -Jose Luis & Sarah Zepeda, *CT*

MARGIE D. HOLMES

-Ginny Davis & Karl Lekberg, *Plymouth*
 -Carol Drew, *MD*

CHANDLER GREGG

-James Kimball, *Plymouth*

EDITH KEMP

-Dr. Wallace Kemp, *Hanover*

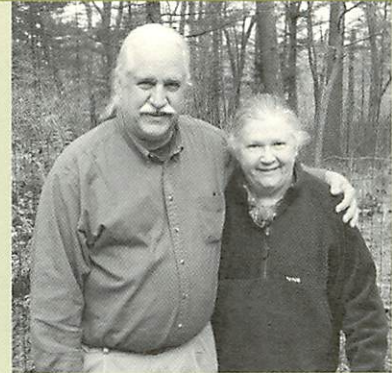
BENJAMIN RYMUT

-Susan Mian, *Somerville*
 -Mary Ann Rymut, *MD*

BENJAMIN RYMUT
& JOHN ZARO

-Joseph & Joan Iovino, *Hingham*

MEET OUR MEMBERS



Members: John & Annie Rockwell

Hometown: Marion, MA

Joined: 1997

John and Annie Rockwell began farming Parlow Mill Farm in Marion, MA back in 1987. In 1994, they started one of the first CSAs in the area offering flowers, fruits, and vegetables. Annie, a florist, and John, an environmental planner, are loyal members and committed conservationists. In 1997, they preserved a portion of their 30 acres with a CR held by Wildlands Trust, and followed it up with a second CR on another part of the property less than a year later. In 2013, after 20 wonderful years, they retired their CSA. Now they're eagerly looking forward to many other projects on their beautiful property—including "Farm Vacations for Good Dogs" providing cage-free in-home boarding for dogs.

THANK YOU 5K RACE SPONSORS!

Our 4th Annual Run for Conservation is presented by Penobscot Investment Management Company, Inc. and also sponsored by Rockland Trust and Anchor Press.

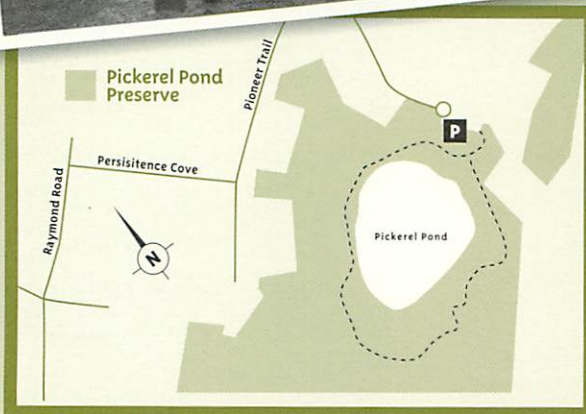
A big thanks to our sponsors for making this great community event possible and for your continued support of conservation.





PROPERTY SPOTLIGHT

STAFF PICK: Pickerel Pond Preserve / 30 Acres, Plymouth, MA
MassLIFT AmeriCorps volunteers Moire Loftus and Allegra Wrocklage
once again share what they like about their favorite preserves.



The best thing about the Pickerel Pond in Plymouth is its unexpectedness. The first time we visited we were excited to find such a stunning and secluded preserve in the midst of a residential development. The Trust acquired the 30-acre preserve in 2006, which includes a pine forest surrounding Pickerel Pond itself. The trail is a relatively easy yet very enjoyable walk, showcasing the pond and its surrounding landscape beautifully. We really enjoy the slight hilliness of the preserve. The trail's changes in elevation give great views of the pond and forest around and creates a sense of seclusion. We love to visit on sunny days, when the pond's water is spectacularly blue. We're also sure birders will enjoy the opportunity to see and hear the birds that are attracted to the mature pine forest surrounding the pond.

Enter the preserve from its trail-head off a neighborhood cul-de-sac. Follow the wooded, slightly hilly trail in a loop around the pond. Great for casual hiking, it takes about 10–15 minutes to complete. Pickerel Pond is a short drive down

Long Pond Road from the Trust's future headquarters at Davis-Douglas Farm. Everyone at the Trust can't wait to take advantage of our new location close to this great preserve!

Directions: Take Route 3 to Exit 2. Briefly travel south on Herring Pond Road, and then west on Long Pond Road. Turn left on Lunn's Way, left onto Raymond Road, left onto Persistence Cove, and left onto Pioneer Trail. Follow Pioneer Trail to the cul-de-sac at its end. Visitors can park on the grassy area to the right of the cul-de-sac, and the trail head is beyond the grassy area and near several large boulders.