



A New Home for Wildlands Trust

The beautiful 10-acre Davis-Douglas Farm on Long Pond Road entices the Trust back to Plymouth.

The Wildlands Trust is moving back to Plymouth! The Trust is pleased to announce that it has entered into an agreement to purchase the Davis-Douglas Farm, a beautiful ten-acre property in the Six Ponds area which will serve as the organization's new permanent home. Long a beloved scenic landmark along Long Pond Road, this lovely small farm is currently owned by the Bongiovanni Family.

"This is a wonderful opportunity to save a beautiful piece of land and to restore the very interesting farmhouse that has been part of the landscape for over a century," said Charlotte Russell, long time Wildlands Trust board member. "We look forward to welcoming the Trust back home."

CONTINUED ON PAGE 6



FARM OPEN HOUSES

This spring and summer, the Trust will host several Davis-Douglas Farm open houses. For information, visit our website: www.wildlandstrust.org



WILDLANDS TRUST

The Wildlands Trust is a non-profit organization dedicated to conserving land and preserving the natural heritage of Southeastern Massachusetts. We work to permanently protect and steward important habitats and landscapes, including woodlands and fields, ponds, coastal areas, agricultural lands, and river systems. www.wildlandstrust.org

The Passing of an Era: Farewell to Two Remarkable Wildlands Women

Leona Asker, founder of Wildlands Trust, and Helen Philbrick, trustee emerita, leave their enduring mark on regional conservation.

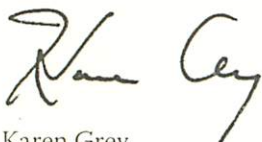
The modern environmental movement was born in the 1960's and has often been linked to the alert set off by Rachel Carson's *Silent Spring*. By the early 1970s, grassroots groups like the Wildlands Trust were sprouting up across the U.S. thanks to the passion and commitment of citizens willing to taking a stand to protect their local environments. More often than not these early leaders and environmental activists were women.

Recently, Southeastern Massachusetts lost two such inspired women, both of whom were instrumental in early efforts to protect our region and to launch and build the Trust. We are saddened to report the passing of Leona Asker, at the age of 91, and Helen Philbrick, at the age of 101.

Leona Asker founded the Wildlands Trust in 1973, at a time when the town of Plymouth was besieged by out-of-town developers looking to take advantage of low property taxes resulting from the opening of the Pilgrim Nuclear Plant. She recruited five like-minded individuals, formed a board, and embarked on a strategy to ask for gifts of land. Asker was responsible for securing many early Trust properties, including the Emery Preserve, which is among the Trust's largest and most visited preserves in Plymouth.

Helen Philbrick's passion for land protection was sparked by her expertise in organic gardening, whose principles she and her husband, Reverend John Philbrick, taught to students from around New England in a classroom building that today serves as the Wildlands Trust's office. Helen served on the Trust's board for nearly 15 years and helped to lead the expansion of our service area from one county to four. We are most grateful to Helen for gifting the Trust's headquarters property in Duxbury, which has served us well for so many years.

So perhaps the key to a long, healthy, fulfilling life is involvement in the Wildlands Trust. We plan to pay tribute to both of these exceptional women and their Wildlands' legacies at our new headquarters, Davis-Douglas Farm.



Karen Grey
President

Board of Directors

CHAIRMAN

Doug Hart/*Duxbury*

VICE CHAIRMAN

Crystal Farrar Gould/*N. Marshfield*

SECRETARY

Charlotte Russell/*Plymouth*

TREASURER

Michael J. Hanlon/*Plymouth*

Philip B. Benjamin/*S. Easton*

Sam Chapin/*Plymouth*

Ken Johnston/*Duxbury*

Pam Kirkpatrick/*Swansea*

Kenneth C. Leonard/*Lakeville*

Greg Lucini/*Berkley*

Ellen Milt/*Plymouth*

Virginia Murray/*Plymouth*

Wayne R. Petersen/*Hanson*

Les Plimpton/*Plymouth*

Howard Randall/*Plympton*

SPECIAL COUNSEL

Michael Nuesse/*Hull*

Staff

EXECUTIVE DIRECTOR

Karen H. Grey

ASSISTANT DIRECTOR

Gabriela Silva, Ph.D.

DIRECTOR OF LAND PROTECTION

Scott MacFaden

DIRECTOR OF STEWARDSHIP

Jim Dehner

MEMBERSHIP COORDINATOR

Kay Foster

MAPPING AND GIS

Marilyn Levandoski

ACCOUNTING

Lisa Burch

COMMUNITY GARDEN MANAGER

Elaine Pollack

AMERICORPS MEMBERS

Alex Etkind

Allison Gillum

Sarah Kugel

Administrative offices are at
165 West Street, Duxbury, MA.

FOR INFORMATION about
membership or the benefits of
conveying land or conservation
restrictions (agricultural included)
to the Trust, call or write:

Wildlands Trust

PO Box 2282

Duxbury, MA 02331

(781) 934-9018 Phone

(781) 934-8110 Fax

info@wildlandstrust.org

www.wildlandstrust.org



Caring for our Lands

Stewardship projects continue to improve habitat and enhance public access on trust properties.

We continue to enhance habitat and public access to our preserves through our stewardship efforts. In 2012, expect more upgrades to wildlife habitats, trails, and parking areas at our most visited preserves. Wildlands Trailblazers help improve property access and maintain trails, and then our Trailrunners group comes to the properties to try out the newly maintained trails. Join us for either or both! (visit www.wildlandstrust.org for more information). Below are a few examples of newly upgraded Preserves.

Lionberger Preserve, Rochester

Nestled among 400 acres of protected lands, the Wildlands Trust's Lionberger Preserve has fields, forests, and wetlands that together offer an ideal combination of natural habitats for sustaining wildlife. The well-maintained woodland trails offer excellent opportunities for walking and hiking. A new kiosk and signage will be added this winter. Park on the grassy pullout on Rounseville Road (Route 105).

Emery Preserve, Plymouth

The Emery Preserve was generously donated by the Emery family in 1973. Park in our new lot on Ship Pond Road and enjoy a tranquil walk along a gradually sloping half-mile trail until you reach the majestic beech tree. Check out our website to hear Charlotte Emery Russell's wonderful story about this property and its protection.

Conant Hill Preserve, Wareham

Overlooking the Weweantic River, this 20-acre preserve offers great opportunities for fishing on Horseshoe Pond and birding along the marsh and shoreline. Many recent upgrades make this a great place to take a walk. Park on Station Road.

Shelburne Carter Preserve, Kingston

Wildlands Trust Trailblazers worked with volunteers and Kingston's Conservation Agent, Maureen Thomas, to help with the stewardship of town conservation lands. We stained the kiosk, fence, and gate; put up signs, and cleared a couple of miles of trails. Take a hike! The property is off Route 106.



Top: Trail at Lionberger Preserve

Middle: Weweantic River at Conant Hill Preserve

Bottom: Wildlands intern Jason Hill spruces-up Shelburne Carter Preserve signage

Some Parting Thoughts from Retiring Board Members

We posed a few questions to our outgoing members about their impressions of the Trust.

MIKE NUESSE of Hingham has served the Trust since 1996, providing leadership on legal matters and also serving as Board Secretary.

What's your favorite Wildlands Trust property?

Willow Brook Farm in Pembroke. My wife and I have taken the kids there many times. It's a great place for a family walk.

Tell us something that you learned about the Trust?

It's amazing to see how far the Trust has come, all because of a shared vision of committed people working together. This is what strikes me when I think about the Trust—great people promoting a great cause that we ALL benefit from.

.....
CAP KANE of Duxbury has also served since 1996, providing strategic leadership for the Trust's policies and activities.

What's your favorite Wildlands Trust property?

The Cushman property in Duxbury. It's amazing that we have a property with beautiful open fields and accessible marsh right in the middle of town.

Tell us something that you learned about the Trust?

I realized early on that at every level, the Wildlands Trust is every bit the caliber of the "granddaddy" of all land trusts *The Trustees of Reservations*—on whose executive committee I served at the same time. The Trust may be smaller but it does not lack stature. [Well said, Cap!]

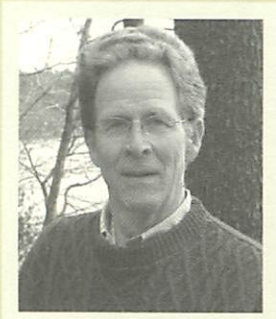
.....
GARY LANGENBACH of Kingston has served on the Wildlands Trust Board since 1999. His knowledge of the local natural environment and his passion for conservation served him well as he led our Acquisitions Committee.

What's your favorite Wildlands Trust property?

I do not have a favorite. I love all of them. Each has a special uniqueness. They all offer some individual feature that has significance.

Tell us something that you learned about the Trust?

I am very impressed with the people who are involved with the Trust. They come from very diverse backgrounds and bring many differing abilities, but they all have a common goal in protecting land. Amazing!



WELCOME BACK SAM

Sam Chapin of Plymouth has re-joined our Board of Directors after having served from 1995 through 2001. We are happy to count on his help once again, especially on the Davis-Douglas Farm — formerly owned by Sam's great-grandfather, Howland Davis. Sam is passionate about land conservation and the work of the Trust. His expertise as a civil engineer is being put to great use on the Davis-Douglas Farm Buildings Committee.

A New Home for Wildlands Trust

—CONTINUED FROM PAGE 1

The Wildlands Trust was based in Plymouth from 1973 until 1995. Since it was founded, the organization has conserved nearly 7,000 acres of land, much of it within the Town of Plymouth.

“In 1995, the Trust moved from Plymouth to Duxbury to make its home in a small building at the back of the 5-acre Philbrick Preserve,” said Karen Grey, Executive Director of Wildlands Trust. “We have always been grateful to Helen Philbrick for donating our first office space, but we’ve known for some time that it was not a permanent solution. The space was adequate for four or five people, but today we have a full-time staff of ten and everything from offices to bathrooms to parking has become a challenge.”

Davis-Douglas Farm is a dream property for the Trust. Besides being a very important land protection project, it will provide the Trust with ample space for staff, stewardship equipment, and outreach programs. It is still very much in the planning stages, but the Trust hopes to rebuild the barn for community education programs and presentations. We also plan to host a community garden on the property, similar to the one we’ve had in Duxbury for the past three years.

The Davis-Douglas Farm was once part of Howland Davis’ estate on Long Pond, and the Bongiovanni Family has designated that the property be named “Davis-Douglas Farm” to honor both Howland Davis and their grandfather, Percy Douglas, who

farmed the land for many years.

“The property holds tremendous meaning to my family and we couldn’t be happier with the outcome,” said David Bongiovanni. “We support the Trust’s plans and are thrilled to know that the property will look very similar to how it has looked for the last hundred years.”

A fundraising campaign will get underway soon, and the Trust hopes to begin work on the property next spring.

An added benefit is that the farm is within a mile of almost one-third of Trust holdings. “Our Plymouth properties get tremendous public use and it will be a lot easier for us to care for them when we are permanently located in the community,” said Grey.

Thank You, Volunteers!

Thanks for all you do—the Trust wouldn’t be where it is without volunteers.

- | | | |
|---------------------|-----------------------|---|
| - Ruth Anderson | - Charlyn Heidenreich | - Cathleen Walker |
| - Joan Bartlett | - Barbara Kelley | - Dorothy Werny |
| - Sam Bartlett | - David Killory | - Frank Werny |
| - Liz Bates | - Deb Lehman | - Lyn White |
| - Michelle Bradshaw | - Kate Leonard | - Molly Williams |
| - Charles Case | - Ellen Leslie | - Sally Wilson |
| - Lourdeen Casoni | - Ross Lieb-Lappen | - Bridie’s Gardeners |
| - Kiley Clapper | - Joe Lundeen | - The Young Organic Gardeners |
| - Phil Clemmons | - Judson Lyon | - Friends of Myles Standish State Forest |
| - Deborah Comeau | - Beth Lyons | - Staff from the Plymouth Eastern Mountain Sports |
| - Debbie D’Isabel | - Julie McCarthy | - Employees of Silko Honda |
| - Linda Daignault | - Peter McLaughlin | - <i>Run for Conservation</i> volunteers |
| - Julie Durant | - Sue McMahan | - Students from Bay Farm Montessori Academy and Lesley University |
| - Steve Etkind | - Allen Moore | - Students and teachers from Meadowridge Behavioral Health Center |
| - Susan Etkind | - Dan Morse | - Rising Tide Charter School |
| - Rich Federico | - Paula Nesoff | - West Bridgewater High School |
| - Chuck Foster | - Liana Patton | - And the awesome <i>Wildlands Trailblazers</i> |
| - Carol Gafford | - Nick Perryclear | |
| - Mary Gartung | - Lois Post | |
| - Kris Gaskins | - Deb Stuart | |
| - Caro Gregg | - Maureen Thomas | |
| - Thai Ha-Ngoc | - Roz Thompson | |
| - Mary Hathaway | - Diane Ventre | |

A Very Special Thanks to:

THE GREAT AMERICAN RAIN BARREL COMPANY for donating a rain barrel for use in the community garden the Trust has started at the Plymouth Area Coalition for the Homeless in Kingston

THAT BLOOMIN’ PLACE for donating tomato plants to Bridie’s Garden at the Plymouth Area Coalition for the Homeless

PATAGONIA-BOSTON for donating eight Patagonia jackets to keep our staff warm in our environmentally correct office

3 Easy Ways to Join, Renew, or Donate

1. Mail the envelope enclosed.
2. Call 781 934-9018.
3. Visit www.wildlandstrust.org. Look for “Support Our Work” on the blue menu bar.

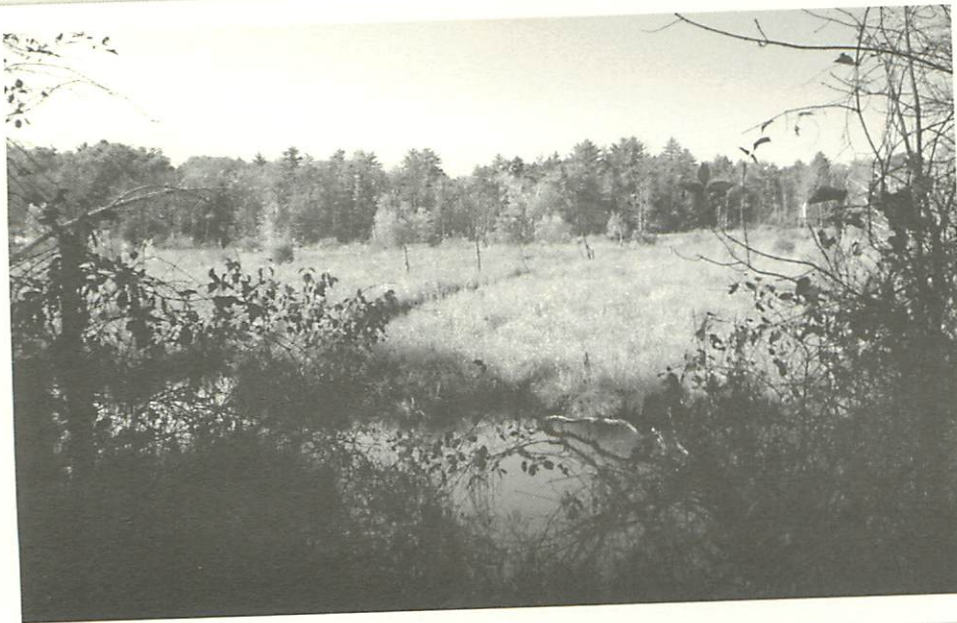
Plympton Land Preservation Efforts on the Move

Thanks to our AmeriCorps members, the long-neglected town of Plympton is back on the Trust's radar.

The Town of Plympton is gearing up efforts to protect its open space resources. Despite its rural character and strong agricultural heritage, it may be surprising to learn that less than 1% of Plympton's total land area is protected. In fact, there is only one permanently protected property in town, the Wildlands Trust's 16.5-acre Winnetuxet River Preserve, located on West Street near the Halifax town line. The Plympton Open Space Committee is looking forward to changing this statistic.

The Town, particularly through its Open Space and Community Preservation Committees, has worked hard to lay the foundation for land conservation in Plympton. In 2008, the Town passed the Community Preservation Act (CPA), which creates a dedicated funding source for open space protection, historic preservation, affordable housing, and outdoor recreation. This was followed in 2009 by the completion of the Plympton Open Space and Recreation Plan (OSRP), a document that establishes the community's land conservation goals. Furthermore, a completed OSRP allows Plympton to be eligible for state-funded land conservation grant programs.

With CPA and the OSRP in place, open space advocates are now ready to take action. Wildlands Trust is working with Plympton to help guide the town through its first CPA-funded open space projects. These projects will help preserve Plympton's rural character and agricultural heritage as well as increase the Town's recreational opportunities. It's an exciting time to be a Plympton resident!



Plympton, in the heart of Wildlands Trust holdings, has been a late bloomer in the area of land protection.



ON THE TRAIL TO HEALTH

Put on your walking shoes, running shoes, or hiking boots and join us! Our AmeriCorps MassLIFT volunteers are offering programs at our preserves to get you outdoors and moving. Along with Jordan Hospital, the Town of Plymouth and others, the Trust is partnering in the Healthy Communities Initiative—a project that recognizes the connection between physical and mental health, and the environment.

For info on events, visit www.wildlandstrust.org

Thank You for Your Contribution

The Trust relies on private philanthropy to fund the work we do to save land throughout the region. You, our members, *are* the Wildlands Trust. Thank you for your vision and for your dedication to preserving land for future generations.

Welcome New Members

We welcome these new members who joined the Trust between March 2011 and November 2011:

Suzanne Allmendinger, *Marshfield*
 David & Sukie Amory, *Duxbury*
 Christina Anderson, *Plymouth*
 Pam Anderson, *Carver*
 Lois Atherton & Sean Withington, *Plymouth*
 Mr. & Mrs. Mark Atherton, *Plymouth*
 Richard Warren Barnes Family, *Plymouth*
 Hannah R. W. Boulton, *Duxbury*
 Cathy Boyd, *Raynham*
 Michelle Brenner, *Plymouth*
 Leslie & Steve Brigham, *Scituate*
 Cathy Burke, *Hanover*
 Laura Campbell, *Scituate*
 Donald Cann, *Rockland*
 Don & Kathy Carney, *Duxbury*
 Alison Carr, *Hanover*
 Scott & Cheryl Chatlin, *Duxbury*
 Tamara Ciocci, *Duxbury*
 Kiley Clapper, *Hull*
 Mr. & Mrs. Harry Cochran, *Fairfax, VA*
 Esther U. Coke, *Marshfield*
 Janet & Steven Cole, *South Easton*
 Robert & Jean Cole, *Sandwich*
 Sara Corey, *Duxbury*
 Revel Cotsford, *Bellingham*
 Henry & Lucinda Day, *Hingham*
 Denny & Marcia DiBona, *North Pembroke*
 Dotty Drago & Debbie Dempsey, *Plymouth*
 Dr. Albert A. Dunn, III, *East Bridgewater*
 The Eisner Family, *Duxbury*
 Marvel Farrior, *Plymouth*
 Jan & Jim Fowler, *South Easton*
 Dodie Frank, *Kingston*
 Marion Galvin, *Plymouth*
 Molly & Mike Garcia, *Plymouth*
 Jenn Garron, *Northborough*
 Phoebe Geer & Matthew Speiser, *NYC*
 Colby Gilbert, *Halifax*
 Mr. & Mrs. Al Gilman, *South Easton*
 Cass Gilmore, *Middleborough*
 Paula Glennan, *Plymouth*
 Mr. & Mrs. Michael J. Hanus, *Duxbury*
 Mark Hayward, *East Bridgewater*
 Maria Hegbloom, *Bridgewater*
 Joyce Holster, *East Wareham*
 Cindy Hunter, *Plymouth*
 Barbara J. Hussey, *North Falmouth*
 F. Terry Jaffoni, *Plymouth*
 Brian Jean, *Swansea*
 Ingrid Kadisevskis, *Pembroke*
 Joanne Keighley, *West Wareham*
 Alice & Bill Kelly, *Marlton, NJ*
 Amy Kelly, *Middleborough*
 Glenn P. Kelly, *Woods Hole*
 Anne Kerrebrock, *Hingham*

Kettle Pond Farm, *Berkley*
 Ashlee Kirkwood, *Fairhaven*
 Megan & Ronnie Koss, *Duxbury*
 Deborah Kugel, *Duxbury*
 Jim & Kitty Lee, *South Easton*
 Maria C. Lehman, *Duxbury*
 Laurie Logan, *Middleborough*
 Lucy Loomis, *Centerville*
 Chris Low, *Scituate*
 Abbie Lyons, *Halifax*
 Mr. & Mrs. James Q. Lyons, *Halifax*
 Elizabeth Lyons, *Duxbury*
 Steven & Lisa Masiello, *North Marshfield*
 Mr. & Mrs. Donald Matinzi, *Plymouth*
 Alice McCarthy, *North Easton*
 Jack McGrath, *Duxbury*
 John & Melody McNeil, *Buzzards Bay*
 Peter & Sylvia McPhail, *West Bridgewater*
 Alice Michan, *North Easton*
 Teresa Miller, *Sharon*
 Todd & Abigail Monska, *Plymouth*
 Mr. & Mrs. Brian Moore, *Halifax*
 Kris Morrison, *Quincy*
 Dr. Kathy Murray-Leisure, *Plymouth*
 Carol Nappellio, *Duxbury*
 Roy V. Nelson, *Plymouth*
 Eric Nielson, *Marshfield*
 George & Lynne O'Neil, *Freetown*
 Liana Patton, *Plymouth*
 Mr. & Mrs. Erik J. Petersen, *Plymouth*
 Sarah R. Phillips, *Hingham*
 Clayton Prario, *Hanson*
 Debby Pretti, *Plympton*
 Kyle Pribish, *Norfolk*
 Mr. & Mrs. Ben Proctor III, *Parkton, MD*
 Lee Pulis, *Plymouth*
 The Randlett Family, *Plymouth*
 Charlotte Richardson, *Norfolk*
 Mr. & Mrs. David M. Riordan, *Plymouth*
 Wally Roenick, *Pembroke*
 Len Rusczycky, *Pembroke*
 Jeanne Shannon, *Middleborough*
 Kevin Schlosser, *Plymouth*
 Chris & Katherine Shepler, *Duxbury*
 Russ & Chiara Smith, *Pembroke*
 Mr. & Mrs. Wayne Smith, *Olney, MD*
 Jerry & Mary Steinke, *Duxbury*
 Virginia Stephenson, *Plymouth*
 Keith Stiding, *Plymouth*
 Matt Sweeney & Rita McDonough, *Marshfield*
 Clark & Kay Taylor, *Needham*
 Peter & Darlene Taylor, *Plymouth*
 Burt Thompson, *Hanover*
 Philip H. Thorn, Jr, *Duxbury*
 Amy Tull, *Duxbury*
 Laurel Utt, *Plympton*

Dr. Susan Waletkus, *Kingston*
 Jane C. Watson, *Seaford, DE*
 Roger Welch, *Duxbury*
 Molly Williams, *Bridgewater*
 Raul Ybarra & Miwa Tanabe, *Pembroke*

In Memory of

MARJORIE BELCHER
 -Inghilt Traenkle, *Plymouth*

URBAN BOBSEINE
 -Mr. & Mrs. Walter Amory, *Duxbury*

GEORGE W. BRADFORD
 -Jean Bradford, *Attleboro*

TIMOTHY FLOYD
 -Mary L. Person & Paul Ronsheim,
Somerville

EDITH M. KEMP
 -Dr. & Mrs. Wallace M. Kemp, Jr., *Hanover*
 -Wilma J. Sanders, *Plymouth*

GARRET VANWART
 -Linda M. Bornstein, *North Scituate*
 -Joyce H. Farrell, *Scituate*
 -Elizabeth W. Flaherty, *Scituate*
 -Mike & Alice Hamer, *Scituate*
 -John & Christine Harris, *Scituate*
 -Ms. Margaret Kearns, *Waltham*
 -William F. Krusell, *Scituate*
 -Jean & Gary McEachern, *Scituate*
 -The Trustees of Reservations
 -Lisa Tompson, *Scituate*
 -Dick & Martha Twigg, *Norwell*
 -Beverly & Richard Walsh, *Scituate*

In Honor of

DR. SHERMAN GELLER
 ON THE OCCASION OF
 HIS BIRTHDAY
 -Leighton & Dorothy Price, *Plymouth*
 -Harriet C. Robbins, *Newton*

MARY HATHAWAY
 -George & Becky Bachi, *Carver*

LEATRICE KEMP
 -Temple B'rith Kodesh, *Rochester, NY*

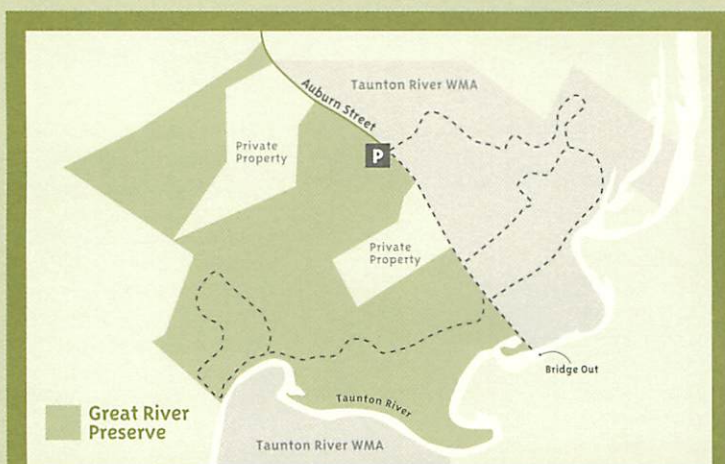
HELEN PHILBRICK
 -Patricia C. Michaud, *Scituate*



PROPERTY SPOTLIGHT

GREAT RIVER PRESERVE Bridgewater, MA

Trails will carry visitors through woodland, riparian, and open field habitats.



The Great River Preserve encompasses a range of habitats and features that few other properties along the Taunton River's main-stem can equal. It includes over a mile of pristine river frontage along one of the most scenic and undisturbed stretches of the Taunton River system, as well as expansive open fields, mixed pine/oak woodlands, vernal pools, and habitat for several rare species, including Eastern box turtle. It is a vital link in a 1400-acre stretch of river corridor extending from the Cherry Street Bridge on the Halifax/Bridgewater line, downriver to the Summer Street Bridge and the extensive fields of the Bridgewater MCI Complex.

First-time visitors to the preserve often remark on its rural feel, which is attributable in part to the demise of the nearby Auburn Street Bridge, and the consequent lack of auto traffic through the area.

PARKING: The parking area is located on Auburn Street, Bridgewater at the trailhead and kiosk. For additional directions, call or refer to our website www.wildlandstrust.org